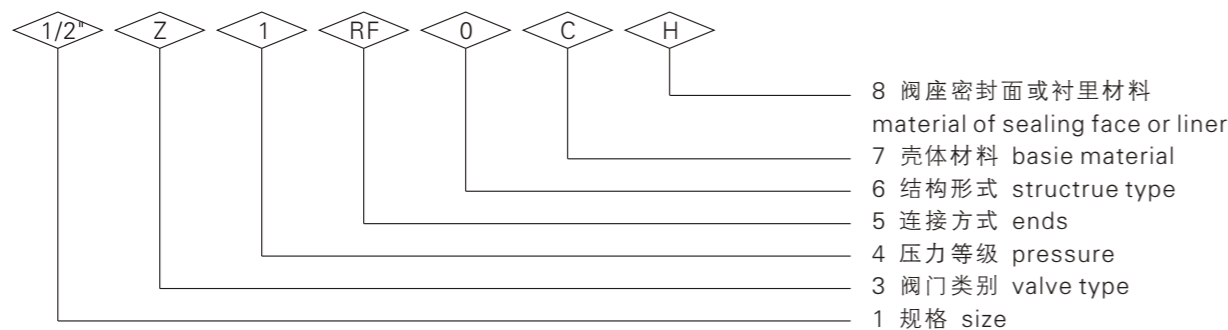


锻钢闸阀 FORGED STEEL GATE VALVE

锻钢闸阀型号编制说明 FORGED STEEL VALVE FIGURE NUMBER SYSTEM

1	规格Size	英制系列以xxin表示;公制系列以xx表示,单位mm省略					
2	驱动方式 Operation type	手动(省略) Hand Operated (omit)					
3	阀门类别 Valve Type	Z-闸阀 Gate Valve	J-截止阀 Globe Valve	H-止回阀 CHECK VALVE			
4	压力等级 Pressure	1-PN1.6 class150	2-PN2.5	3-class300	4-PN4.0 class400	6-PN6.4 class600	8-class800
		9-class900	10-PN10.0	15-class1500	16PN16.0	20-PN20.0	25-class2500
5	连接方式 Ends	RF-突面法兰Raised Face	RJ环接面法兰Ring Joint	MFM凹凸法兰Male and Female Face	BW对接焊 Butt weld		
		SW-承插焊Socket-weld	G-55° 锥管螺纹(RC)	T-60° 锥管螺纹(NPT)	TG槽面法兰Tongue and Groove face		
6	结构形式 Structure Type	闸阀 Gate Valve					
		BO-栓接阀盖、上螺纹式BB-OS&Y	WO-焊接阀盖、下螺纹式WB-OS&Y	PO-自密封阀盖、上螺纹式PB、OS&Y	LO-加长阀盖、上螺纹式LB-OS&Y		
		WI-焊接阀盖、下螺纹式WB-ISRS	BI-栓接阀盖、下螺纹式BB-IRSS				
		截止阀 Globe Valve					
		BO-栓接阀盖、上螺纹式BB-OS&Y	YBO-Y型、栓接阀盖、上螺纹式Y type BB-OS&Y	WO-焊接阀盖、上螺纹式WB-OS&Y	YWO-Y型、焊接阀盖、上螺纹式Y type WB-OS&Y		
		PO-自密封阀盖、上螺纹式PB-OS&Y	LO-加长阀盖、上螺纹式LB-OS&Y	WI-焊接阀盖、下螺纹式WB-ISRS	BI-栓接阀盖、下螺纹式BB-ISRS		
7	壳体材料 Basic Material	C-A105	C-F5	C6-F11	C9-F22	BL-LF2	CL-LF3
		8-F304	8M-F316	3-304L	3M-316L	ML-MONEL	
8	*阀座密封面 或衬里材料 Material of Seat face or Liner	H-Cr13系 不锈钢Cr13 S.S		E-18-8系 不锈钢18-8 S.S		R-Mo2Ti系 不锈钢Mo2Ti S.S	
		D-渗氮钢nitriding steel		M-蒙耐尔合金Monel Alloy		Y-硬质合金Hard Face	

注: 1、阀体加长型锻钢闸阀的连接方式以阀体凸面端连接方式代号作为标记,并在代号后面加上P,凹面端连接方式另行说明。  
The connection of forged steel gate valve with extended body is marked by the connection codes of body raised face end, plus the letter 'P' behind. The connection of female end is separately specified.  
2、\*由阀体直接加工的阀座密封面材料代号用W表示  
Use 'W' to express seat sealing surface material which is processed directly by valve body.  
3、\*当密封副的密封面材料不同时,以硬度低的材料代号表示  
Special Requirements not shown, should be indicated in the purchase order  
4、样本中列出的型号不涉及口径及阀门的材料编号,由用户给定  
The models listed in the sample book have no reference to sizes and valve material symbols, they are to be decided by users.



型号示例: FOR example

1"-Z15BWPBCY

闸阀, 1" ANSI CLASS 1500, 对焊连接, 自密封阀盖、明杆升降式、壳体(阀体、阀盖、闸板)材料A105, 阀座密封面材料STL。  
Gate valve, 1" ANSI CLASS 1500, Butt weld Ends, Pressure sealing Bonnet, Bolted Cover, Boyd&Bonnet & Wedge Forged Steel A105, Seat sealing face material STL.

2"-H8TBS8W

止回阀, 2" ANSI CLASS 800, NPT 锥管螺纹连接, 栓接阀盖, 旋启式, 壳体(阀体、阀盖、阀瓣)材料F304, 阀座密封面本体加工。  
Check valve, 2" ANSI CLASS 800, NPT Ends, Bolted Bonnet, Swing Type Body&Bonnet& Disc Stainless Steel F34, Seat seal-ing face Body machined.

锻钢闸阀 FORGED STEEL GATE VALVE

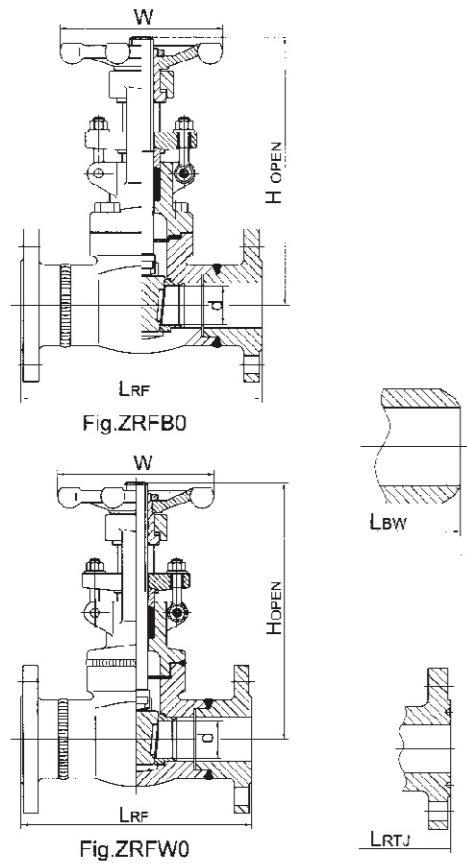
锻钢闸阀供货范围 FORGED STEEL GATE VALVE PRODUCT LINE

连接方式 Ends	通径形式 Port	结构形式 Structure	压力 Pressure		规格(Size)									
			PN	CLASS	8	10	15	20	25	32	40	50	65	
法兰、对焊 Flange、Buttwel	缩径 RP	栓接/焊接阀盖-上螺纹式BB/WB-OS&Y	1.6~10.0	150			*	*	*	*	*	*	*	*
				300			*	*	*	*	*	*	*	*
				600			*	*	*	*	*	*	*	*
法兰、对焊 Flange、Buttwel	全径 PP	栓接/焊接/自密封阀盖-上螺纹式BB/WB/PB-OS&Y	16.0~26.0	900			*	*	*	*	*	*	*	
				1500			*	*	*	*	*	*	*	
法兰、对焊 Flange、Buttwel	缩径 RP	栓接/焊接阀盖-上螺纹式BB/WB-OS&Y	16.0~42.0	900			*	*	*	*	*	*	*	
				1500			*	*	*	*	*	*	*	
				2500			*	*	*	*	*	*	*	
螺纹、承插焊 Threaded、Socket	缩径 RP	栓接/焊接阀盖-上螺纹式/下螺纹式BB/WB OS&Y/ ISRS	1.6~10.0	150	*	*	*	*	*	*	*	*	*	
				300	*	*	*	*	*	*	*	*	*	
				600	*	*	*	*	*	*	*	*	*	
				800	*	*	*	*	*	*	*	*	*	
螺纹、承插焊 Threaded、Socket	全径 FP	栓接/焊接阀盖-上螺纹式/下螺纹式BB/WB OS&Y/ ISRS	1.6~10.0	150	*	*	*	*	*	*	*	*	*	
				300	*	*	*	*	*	*	*	*	*	
				600	*	*	*	*	*	*	*	*	*	
				800	*	*	*	*	*	*	*	*	*	
螺纹、承插焊 Threaded、Socket	全径 FP	栓接/焊接/自密封阀盖-上螺纹式BB/WB OS&Y/ ISRS	16~26.0	900	*	*	*	*	*	*	*	*		
				1500	*	*	*	*	*	*	*	*	*	
法兰、对焊、螺纹、承插焊 Flange、Buttweld Threaded、Socket	全径 FP	栓接加长阀盖-上螺纹式(低温)BB/LB-OS-Y	1.6~10.0	150			*	*	*	*	*	*	*	
				300			*	*	*	*	*	*	*	
				600			*	*	*	*	*	*	*	
				800			*	*	*	*	*	*	*	
加长端-对焊、螺纹、承插焊 Buttweld、Threaded、Socket	缩径 RP	栓接/焊接阀盖-上螺纹式BB/WB-OS&Y	-	800			*	*	*	*	*	*		
				1500			*	*	*	*	*	*		

性能范围 Performance Specification

公称压力 Normina Pressure	CLASS							
	150	300	600	800	900	1500	2500	
试验压力 (Mpa) Test Pressure	壳体试验 Shell Test	2.93	7.55	10.0	20.1	15.0	37.5	63.0
	高压密封 High Pressure Seal Test	2.07	5.52	7.31	14.7	11.03	27.5	46.0
	低压密封 Low Pressure Seal Test	0.6						
适用温度 Applicable Temperature	≤425°C							
适用介质 Applicable Medium	水、油、气 Water、oil&gas							

锻钢闸阀 FORGED STEEL GATE VALVE



压力Pressure :CLASS150~600

- 栓接阀盖或焊接式阀盖  
Bolted bonnet or welded bonnet
- 缩径  
Reduced Port
- 刚性闸板  
Solid wedge gate
- 法兰连接或对焊连接  
Flange ends or Butt-welding ends

技术规范 Technical Specification

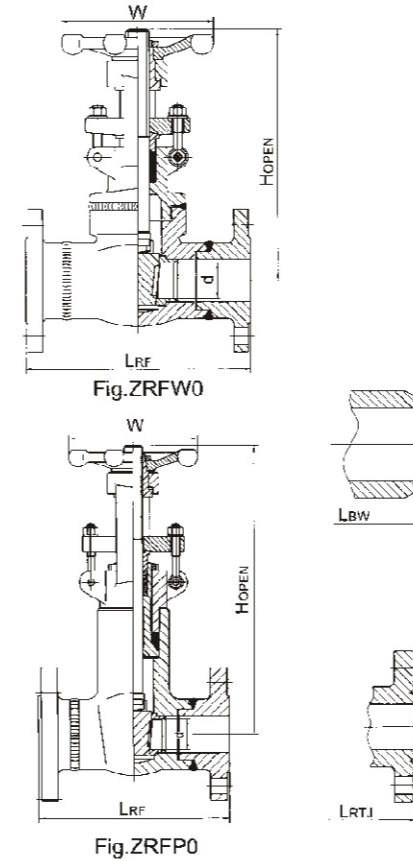
设计标准 Design Standard	ASME B16.34/API600
压力温度等级 Pressure-Temperature Rating	ASME B16.34
结构长度 Face-Face	ASME B16.10
法兰型式尺寸 Flange Ends	ASME B16.5
对焊端连接Buttwelding Ends	ASME B16.25
检验与试验 Inspection & Test	API598

主要外形尺寸和重量 Main Dimensions & Weight

压力 Pressure	规格Size in.	阀门尺寸 Valve Main Dimension						重量 Weight(kg)
		d(缩径)	L <sub>RF</sub>	L <sub>BW</sub>	L <sub>RJT</sub>	H	W	
CLASS150	1/2	10	108	108	119	162	100	3.0
	3/4	12.7	117	117	130	162	100	3.5
	1	19.1	127	127	140	211	125	5.5
	1-1/4	24	140	140	153	238	125	6.8
	1-1/2	31.8	165	165	178	257	160	10.4
	2	38.1	178	216	190	282	180	14.4
CLASS300	1/2	10	140	140	151	162	100	3.6
	3/4	12.7	152	152	165	162	100	4.9
	1	19.1	165	165	178	211	125	7.0
	1-1/4	24	178	178	191	238	125	9.4
	1-1/2	31.8	190	190	203	257	160	13.3
	2	38.1	216	216	232	282	180	18.0
CLASS600	1/2	10	165	165	165	162	100	4.2
	3/4	12.7	190	190	190	162	100	5.8
	1	19.1	216	216	216	211	125	8.8
	1-1/4	24	229	229	229	238	125	12.1
	1-1/2	31.8	241	241	241	257	160	15.6
	2	38.1	292	292	295	282	180	19.5
2-1/2	48.5	330	330	333	357	200	32.0	

注：H为阀门全开时的高度 Note:H means the height when valve is fully opened.

锻钢闸阀 FORGED STEEL GATE VALVE



压力Pressure :CLASS900~2500

- 焊接式阀盖/自密封阀盖  
Welded Bonnet/ Pressure Sealed Bonnet
- 缩径  
Reduced Port
- 刚性闸板  
Solid wedge gate
- 法兰连接或对焊连接  
Flange ends or Butt-welding ends

技术规范 Technical Specification

技术规范 Technical Specification	ASME/API
设计标准 Design Standard	ASME B16.34/API600
压力温度等级 Pressure-Temperature Rating	ASME B16.34
结构长度 Face-Face	ASME B16.10
法兰型式尺寸 Flange Ends	ASME B 16.5
对焊端连接Buttwelding Ends	ASME B16.25
检验与试验 Inspection & Test	API598

主要外形尺寸和重量 Main Dimensions & Weight

压力 Pressure	规格Size in.	阀门尺寸 Valve Main Dimension							重量 Weight(kg)	
		d(缩径)	L <sub>RF</sub>	L <sub>BW</sub>	R <sub>RJT</sub>	H		W	WB	PB
CLASS900	1/2	10	216	216	216	197	321	180	9.8	11.5
	3/4	13	229	229	229	211	321	180	9.8	11.2
	1	19	254	254	254	238	321	180	9.5	10.8
	1-1/4	24	279	279	279	257	380	200	17.5	18.0
	1-1/2	40	305	305	305	276	414	200	21.6	22.0
	2	50	368	368	371	320	502	300	42.7	44.0
CLASS1500	1/2	10	216	216	216	197	321	180	9.8	11.5
	3/4	13	229	229	229	211	321	180	9.7	11.2
	1	19	254	254	254	238	321	180	9.5	10.8
	1-1/4	24	279	279	279	257	380	200	17.5	18.0
	1-1/2	40	305	305	305	276	414	200	21.6	22.0
	2	50	368	368	371	320	502	300	42.7	44.0
CLASS2500	1/2	10	264	264	264	197	321	180	12.3	13.0
	3/4	13	276	276	273	211	321	180	12.1	12.7
	1	19	308	308	308	238	321	180	11.8	12.5
	1-1/4	24	349	349	252.2	257	380	200	20.9	21.8
	1-1/2	40	384	384	387.2	276	414	200	27.5	29.3
	2	50	451	451	454.2	320	502	300	53.3	55.4

注：H为阀门全开时的高度 Note:H means the height when valve is fully opened.

锻钢闸阀 FORGED STEEL GATE VALVE

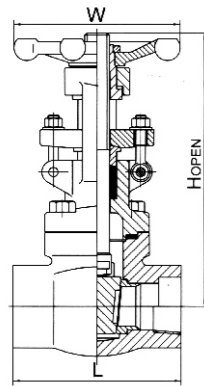


Fig.SW(I)B0

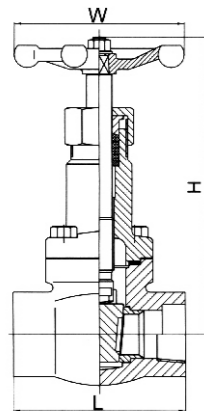


Fig.SW(T)BI

压力Pressure :CLASS150~600&CLASS800

- 栓接阀盖或焊接阀盖  
Bolted bonnet or welded bonnet
- 上螺纹或下螺纹阀杆  
Outside screw Stem or Inside screw stem
- 全径或缩径  
Full port or reduced port
- 刚性闸板  
Solid wedge gate
- 螺纹连接或承插焊连接  
Treaded ends or SW ends

技术规范 Technical Specification

技术规范 Technical Specification	ASME/API
设计标准 Design Standard	API602
压力温度等级 Pressure-Temperature Rating	ASME B16.34
结构长度 Face-Face	工厂标准Factory Standard
法兰型式尺寸 Flange Ends	ASME B16.11
对焊端连接Buttwelding Ends	ASME B1.20.1
检验与试验Inspection & Test	API598

主要外形尺寸和重量 Main Dimensions & Weight

压力 Pressure	结构形式 Structure	规格Size		阀门尺寸Valve Main Dimension					重量 Weight(kg)	
		in		d		L	H	W	in	
		缩径	全径	缩径	全径				缩径	全径
CLASS 150~600 CLASS800	上螺纹式 OS&Y	1/4	-	7	-	79	166	100	2.2	-
		3/8	1/4	10	7	79	166	100	2.2	2.2
		1/2	3/8	10	10	79	166	100	2.2	2.2
		3/4	1/2	13	13	92	169	100	2.2	2.2
		1	3/4	18	18	111	193	125	4.7	4.3
		1-1/4	1	24	24	120	236	160	5.9	5.9
		1-1/2	1-1/4	29	29	120	146	160	6.9	6.9
		2	1-1/2	36.5	36.5	140	283	180	11.1	11.1
CLASS 150~600 CLASS800	下螺纹式 ISRS	-	2	-	46.5	178	330	200	-	15.2
		1/4	-	7	-	79	169	100	2.2	-
		3/8	1/4	10	7	79	169	100	2.2	2.4
		1/2	3/8	10	10	79	169	100	2.2	2.4
		3/4	1/2	13	13	92	182	100	2.2	2.3
		1	3/4	18	18	111	208	125	4.6	4.8
		1-1/4	1	24	24	120	254	160	5.9	6.1
		1-1/2	1-1/4	29	29	120	290	160	6.9	7.2
2	1-1/2	36.5	36.5	140	330	180	11.1	11.2		
-	2	-	46.5	178	372	200	-	14.1		

注：H为阀门全开时的高度 Note:H means the height when valve is fully opened.

锻钢闸阀 FORGED STEEL GATE VALVE

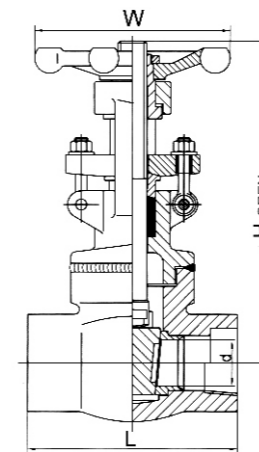


Fig.ZSW(T)B0

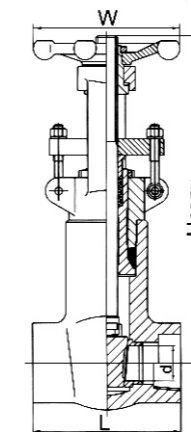


Fig.ZSW(T)P0

压力Pressure :CLASS900~1500

- 栓接阀盖/焊接式阀盖/自密封阀盖  
Bolted bonnet/Welded bonnet /Pressure sealed bonnet
- 全径或缩径  
Full port or reduced port
- 刚性闸板  
Solid wedge gate
- 螺纹连接或承插焊连接  
Treaded ends or SW ends

技术规范 Technical Specification

技术规范 Technical Specification	ASME/API
设计标准 Design Standard	API602
压力温度等级 Pressure-Temperature Rating	ASME B16.34
结构长度 Face-Face	工厂标准Factory Standard
承插焊端连接 Socket-welded Ends	ASME B16.11
螺纹连接 Threaded Ends	ASME B1.20.1
检验与试验Inspection & Test	API598

主要外形尺寸和重量 Main Dimensions & Weight

压力 Pressure	规格Size in	阀门尺寸Valve Main Dimension								重量 Weight(kg)	
		d(全径)		L		H		W		in	
		BB/WG	PB	BB/WG	PB	BB/WG	PB	BB/WG	PB	BB/WG	PB
CLASS900	1/4	7	-	102	-	166	-	120	-	3.6	-
	3/8	10	-	102	-	166	-	120	-	3.5	-
	1/2	13	13	102	140	169	321	120	125	3.4	11.5
	3/4	18	18	111	140	193	321	125	125	3.8	11.0
	1	24	24	120	140	230	321	160	160	7.8	10.2
	1-1/4	29	29	120	178	246	380	160	160	11.9	20.5
	1-1/2	36.5	36.5	140	178	283	414	180	180	12.2	21.7
	2	46.5	46.5	178	216	330	502	200	240	21.9	43.5
CLASS1500	1/4	7	-	102	-	166	-	120	-	3.6	-
	3/8	10	-	102	-	166	-	120	-	3.5	-
	1/2	13	13	102	140	169	321	120	125	3.4	11.5
	3/4	18	18	111	140	193	321	125	125	3.8	11.0
	1	24	24	120	140	230	321	160	160	7.8	10.2
	1-1/4	29	29	120	178	246	380	160	160	11.9	20.5
	1-1/2	36.5	36.5	140	178	283	414	180	180	12.2	21.7
	2	46.5	46.5	178	216	330	502	200	240	21.9	43.5

注：H为阀门全开时的高度 Note:H means the height when valve is fully opened.